

To take precautions against wetting and dampness. Floor raising, Ceramic coating, Door front water shutter, Doormat

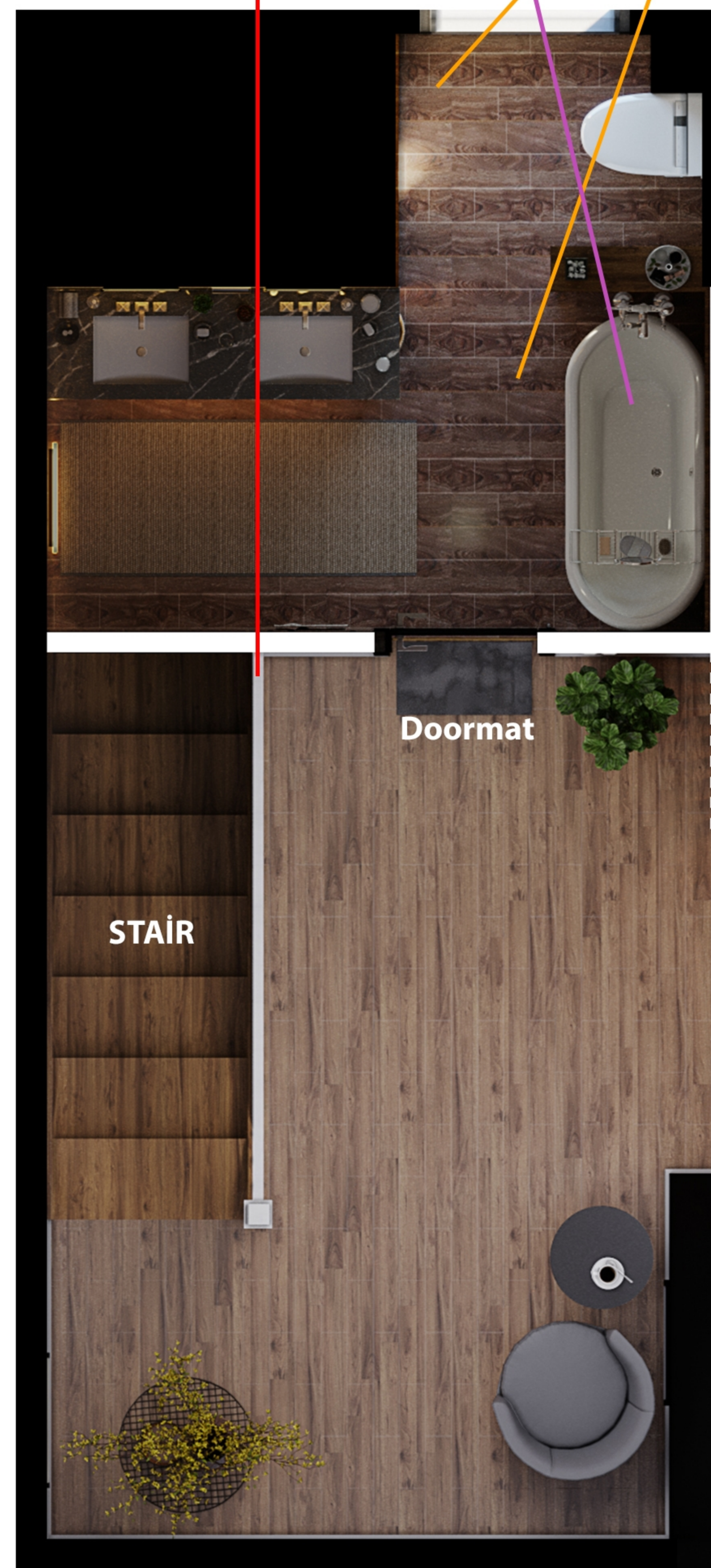
Choosing the wall color in a dark tone to focus on the need elements

Rotating the bathtub 90 degrees to maintain the volume for the bed.

cut the incoming part of the railing wall

Combining the flooring with the level under the toilet and making wooden textured ceramic on it.

Covering the end of the stairwell with dry-wall at the level of the 4" thick electrical socket.



Increasing functionality without completely separating the translucent and space by adding 2 "x 4" wooden studs that rise up to the ceiling.

carrying electricity through the newly built wall

Using different types of lighting to strengthen the separation within the space











